

MONTHLY MEMBERSHIP PROGRESS REPORT

District 11 B2

Results as of: 5/31/2025

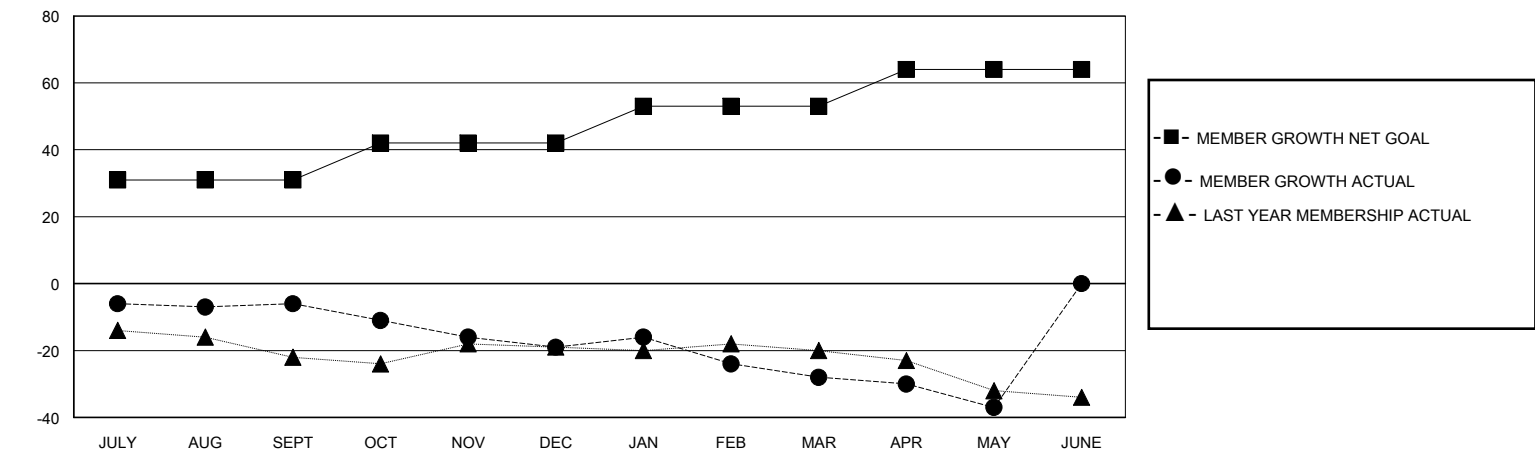
GMT: LOCATION MICHIGAN GMT CA			
Clubs			
RESULTS FOR 2024-2025			
QUARTER	NEW CLUB GOAL	NEW CLUBS	DROPPED CLUBS
JULY/AUG/SEPT	0	0	0
OCT/NOV/DEC	0	0	0
JAN/FEB/MAR	0	0	0
APR/MAY/JUNE	1	0	0

Members			
RESULTS FOR 2024-2025			
QUARTER	MEMBER GROWTH NET GOAL	MEMBER GROWTH ACTUAL	DROPPED MEMBERS ACTUAL (including transfers)
JULY/AUG/SEPT	31	26	27
OCT/NOV/DEC	11	16	25
JAN/FEB/MAR	11	21	25
APR/MAY/JUNE	11	1	10

GOALS AND ACTUAL NEW CLUBS CUMULATIVE



GOALS AND ACTUAL MEMBERS CUMULATIVE



DROPPED CLUBS: 0		15 CLUBS OF 31 ADDED 1 OR MORE NEW MEMBERS	<u>GENDER DISTRIBUTION</u>	
			MALE	495 (63.46%)
			FEMALE	284 (36.41%)
<u>DROPPED MEMBERS</u>		CLICK HERE FOR CUMULATIVE MEMBERSHIP DATA		
DECEASED	14		TOTAL FAMILY UNIT MEMBERS 204	
CLUB CANCELLED	0			
OTHER	73		FAMILY MEMBERS PAYING HALF DUES 103	
TOTAL	87			